

Bar|Scan[®] Asset Management

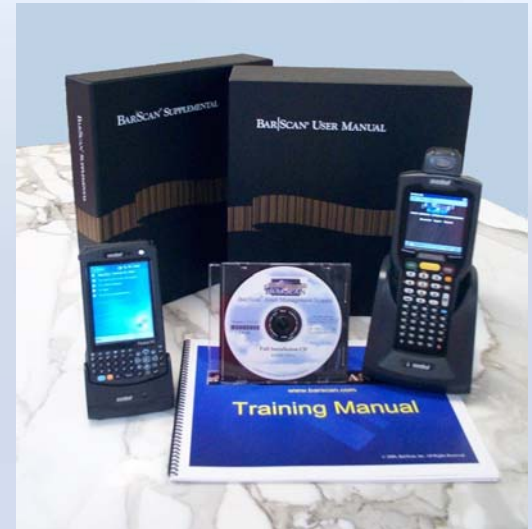


Why Bar|Scan[®]?

The modern workplace is a complex combination of computer equipment, furniture, and other equipment with compliance, accounting and location tracking issues. To better manage these changing environments, information systems, facilities, and finance managers are turning to automated bar code asset management systems like Bar|Scan.

What is Bar Code Asset Management?

A serialized barcode label, RFID tag or UID compliant label is attached to each asset. Then, using Microsoft[®] Pocket PC based readers, IT deployment, receiving, or inventory personnel can capture location, cost center, description, and other information and synchronize to a host computer using a USB connection or Wi-Fi network. Changes in configuration, owner and status of assets can be captured in a similar manner, as they occur, by IT, facilities and warehouse personnel. The information is then available for inquiry, reporting, or export to a central data repository.



When Does Bar|Scan Make Sense?

Whenever you are required to perform inventories of assets. Bar|Scan can dramatically improve accuracy and save up to 80% of the time you spend on compliance inventories after the first year.

When your employees use personal computers and peripherals. Improve utilization, provide better maintenance and technical support by identifying the models and serial numbers prior to a field service call or help desk function. Improve record keeping for warranties and repair. Deter theft by assigning assets to departments or individuals.

When your auditors insist on greater control of your assets or when you need to meet regulatory requirements. Compliance with the Unique Identification mandate (UID) from the DoD, GASB 34, Sarbanes-Oxley, ISO certification and others often requires a system like Bar|Scan.

When you need to track requests for equipment and furniture. Bar|Scan's Work Order Module allows you to create, track and automatically update the status of each request.

When you want to document valuable assets for insurance and security purposes. Bar|Scan can produce listings and images of assets by location in the event of a fire, natural disaster or theft.

When you have equipment or furniture in storage. Avoid wasting valuable time hunting through storage areas for assets you may or may not have—or worse, purchasing new equipment or furniture unnecessarily because you can't locate items in storage.



The Bar|Scan[®] Process

Describe Bar|Scan To Me

Bar|Scan is an easy to use, Windows[®] based system designed specifically to accommodate IT, facility, and accounting interface requirements. Our system includes the Pocket PC based bar code reader program and personal computer software. We also provide your batch, RFID or Wi-Fi barcode hardware and ID labels.

Bar|Scan's report generator allows you to create reports of your own design. You can select which assets to print and in what order, which columns should appear, where you want page breaks and subtotals, you can also elect to have any field printed in bar code form for scanning purposes.

Bar|Scan can easily export and import any information in a variety of formats including Excel, CSV, XML, or ASCII. Because it is a SQL compliant database, the data can be accessed directly by many Enterprise Systems.



How Does It Work?

Before the inventory, each physical location, cost center, and other information is entered (or imported) into Bar|Scan and downloaded into the Pocket PC to allow inventory personnel to select, rather than keystroke, inventory information directly into the Pocket PC based bar code readers.

Bar code room tags can be attached to the door jamb, pallet, or phone jack in each physical location to make future inventories easier. Labels are available in a variety of materials and can have your company name and logo added, or they can be printed directly from Bar|Scan.

How broadly or specifically you wish to describe your assets is entirely up to you. Standardized descriptions called Catalogs are developed and organized by Category, Type and Description. These are then also downloaded into the Pocket PC before the inventory. Digital images can be added to assist inventory personnel in identifying various types of specialized assets.

In addition to standard information, each Catalog has up to seven Attributes which correspond to the Category. An integrated library of descriptions for Type, Description, Manufacturer and each Attribute is available in pop-up windows which can be added to or changed to meet your specific requirements.

In summary, the Bar|Scan Catalog process allows personnel to attach consistent and detailed descriptions to your assets.

The Bar|Scan® Process



You can configure Bar|Scan in your Microsoft® Pocket PC based bar code reader to prompt for an almost unlimited variety of questions. They commonly include: Serial Number, Secondary Number (existing numeric property tag), Purchase Order Number (for receiving purposes), User Name, System Number (to link PC's and peripherals), Work Order Number, and bar code Room Tag. Unlike some systems with a pre-set limit, any additional prompts can be downloaded to meet your requirements, even User Defined Fields that you created. You can also download your assets for Audit Validation. Scan an existing Asset Label and Bar|Scan will display any previously collected information that you require. Finally, you can customize how the user should answer the question, including optional or mandatory response, format of the response, and if previous responses should remain for reference.

Inventory personnel can synchronize the inventory data to the host computer over a USB cable or Wi-Fi network. Unlike many other systems, this data is transferred into a temporary transaction file for additional error checking and editing before it is moved to the master asset database. You are assured that the data meets your strict data collection requirements.

Your inventory data can be queried by ordering or filtering the data by any of the over ninety data elements which can be tracked for a given asset. Unlike most other systems, data can be edited individually or globally by using the Bar|Scan Range Feature. For example, 50 occurrences of a cost center can be changed to another cost center with only a few keystrokes.

Bar|Scan's easy to use, SQL based report generator means that you can create reports of your own design. Pop-up choices make creating a new report a snap. You can select which assets to print and in what order, which columns should appear, where you want page breaks and subtotals. You can elect to have any field printed in bar code form for scanning purposes. Save your report at anytime for future printing. Preview and send your report to your printer or export in popular file formats including Microsoft® Excel, CSV, delimited or XML. Best of all, the report generator is built right in so there is no other software to learn.

Because Bar|Scan is available on a local area network, IT, facilities, and financial staff can have immediate access to information they require. Extensive Password protection can control which functions and menus your staff is authorized to access. Password protection is available all the way down to the individual file level.

DEMO BAR CODE ASSET MANAGEMENT SYSTEM (SYSTEM/PERSONAL COMPUTER EQUIPMENT BY MFR. TYPE)													2:05:31 PM
FILTER: CATALOG CATEGORY = EP											REPORT ORDER: MFR, TYPE, DESC		
Asset #	CE	SL	CS	EP	PR	DE	DE	DE	DE	DE	DE	DE	DE
#	CE	SL	CS	EP	PR	DE	DE	DE	DE	DE	DE	DE	DE
FA00071250	O	II	EP4313	PERI COMP	DELL OPTIFLEX GX520	DELL	00X20	0689778463	BERMAN,B	MP-500 -10 -1050			
FA00004300	O	II	EP4351	PERI COMP	DELL PRECISION 380N LENOVO	DELL	6W700	1122683512	NETWORK	MP-500 -11 -PHI RM			
FA00004200	O	II	EP4312	PERI COMP	DELL PRECISION W/S 490	DELL	9W463	2472027	MARSHALL,P	MP-500 -10 -1000C			
FA000041500	O	II	EP4341	PERI COMP	DELL XPS 700	DELL	XP7870MN	5427855106	SHARKEE	MP-500 -09 -0900N			
FA000043630	O	II	EP4341	PERI COMP	DELL XPS 700	DELL	XP7870MN	3279420	SHARKEE	MP-500 -14 -1400C			
[Total # of items for Catalog Type PERI COMP = 3]													
FA000043900	O	II	EP4349	PORT COMP	DELL LATITUDE D620	DELL	D620	20490478501	EHLERS,K	MP-500 -11 -1100A			
[Total # of items for Catalog Type PORT COMP = 1]													
[Total # of items for Catalog Manufacturer DELL = 6]													
FA000046900	O	II	EP5500	PRINTER-DM	EPSON DFX-9000 IMPACT	EPSON	C11C60001	271846807	HARDEN,B	MP-500 -09 -0900I			
FA000046100	O	II	EP5500	PRINTER-DM	EPSON DFX-9000 IMPACT	EPSON	C11C60001	280342308	CRUTCHFIELD,R	MP-500 -09 -0906			
FA000046300	O	II	EP5500	PRINTER-DM	EPSON DFX-9000 IMPACT	EPSON	C11C60001	271846406	DEMPSEY,S	MP-500 -09 -0903			
FA000046400	O	II	EP5500	PRINTER-DM	EPSON DFX-9000 IMPACT	EPSON	C11C60001	271845740	SULLIVAN,K	MP-500 -09 -0900R			
FA000046400	O	II	EP5500	PRINTER-DM	EPSON DFX-9000 IMPACT	EPSON	C11C60001	251115789	SHARKEE	MP-500 -10 -1014B			
FA00072800	O	II	EP5500	PRINTER-DM	EPSON DFX-9000 IMPACT	EPSON	C11C60001	280324435	VANDENB,H	MP-500 -10 -1000E			
FA000730100	O	II	EP5500	PRINTER-DM	EPSON DFX-9000 IMPACT	EPSON	C11C60001	274178300	BLACK,C	MP-500 -12 -1200B			
FA000730800	O	II	EP5500	PRINTER-DM	EPSON DFX-9000 IMPACT	EPSON	C11C60001	280175630	JAMES,M	MP-500 -10 -1014B			
FA000731500	O	II	EP5501	PRINTER-DM	EPSON LQ-2180 IMPACT	EPSON	C272001	134178794337	MENSBURM,K	MP-500 -10 -1000F			
FA000046600	O	II	EP5501	PRINTER-DM	EPSON LQ-2180 IMPACT	EPSON	C272001	134180001794	SHARKEE	MP-500 -09 -0900N			
FA000041800	O	II	EP5501	PRINTER-DM	EPSON LQ-2180 IMPACT	EPSON	C272001	1341000084370	SHARKEE	MP-500 -09 -0900N			
[Total # of items for Catalog Type PRINTER-DM = 11]													
FA000024200	O	II	EP2628	PRINTER-2I	EPSON STYLUS PHOTO 82400	EPSON	C11C60011	NCNE	ESSEX,E	MP-500 -10 -1000L			
[Total # of items for Catalog Type PRINTER-2I = 1]													
[Total # of items for Catalog Manufacturer EPSON = 12]													
FA000047700	O	II	EP4304	PERI COMP	GATEWAY E-2500E1	GATEWAY	1080125	72004009	HARDEN,B	MP-500 -09 -0900A			
FA000046700	O	II	EP4304	PERI COMP	GATEWAY E-2500E1	GATEWAY	1080125	72001609	SULLIVAN,K	MP-500 -09 -0900N			
FA000750200	O	II	EP4264	PERI COMP	GATEWAY E-2500S	GATEWAY	1080824	7050112370	JAMES,M	MP-500 -11 -1100M			
[Total # of items for Catalog Type PERI COMP = 3]													
[Total # of items for Catalog Manufacturer GATEWAY = 3]													
FA000043700	O	II	EP4317	PERI COMP	HP COMPAQ DC7600	HEWLETT PACKARD	ENQ20UT	726004419	NETWORK	MP-500 -11 -018 RM			
[Total # of items for Catalog Type PERI COMP = 1]													
FA000047400	O	II	EP2655	PRINTER-2I	HP BUSINESS INKJET 2600	HEWLETT PACKARD	CH74A	80116161	HARDEN,B	MP-500 -14 -1400D			
FA000047600	O	II	EP2655	PRINTER-2I	HP BUSINESS INKJET 2600	HEWLETT PACKARD	CH74A	80281	SHARKEE	MP-500 -09 -0900C			



Bar|Scan[®] Asset Inventory

Why is Bar|Scan a better barcode tool for your asset inventory?

- Bar|Scan[®] will make sure that your physical inventory is accurate before updating your repository. Bar|Scan has extensive inventory validation built-in. Never worry about a duplicated serial or asset number again.



- Bar|Scan can work on most Microsoft[®] Pocket PC or Windows[®] CE mobile devices, not just one or two. Choose the right hardware for your unique environment, not just one vendor's offering. Bar|Scan supports Wi-Fi and RFID ready devices.
- Bar|Scan adds total flexibility to data collection with your mobile device. Easy to use configuration tool for device prompting. Change the device prompting at any time, no obsolescence. Choose which data elements to download into the device. Build multiple configurations for different functions, e.g. receiving, audit, disposal.
- Bar|Scan is easy to integrate with your existing asset repository. Supports ODBC, CSV, XML, Excel, and other file interface formats. Menu driven import and export generation, no programming required. Use XML scripting to launch your import and export instructions.
- Bar|Scan can adjust to your changing needs. Add, change and delete fields as your requirements change. Modify your imports and export instructions quickly to meet new requirements.
- Using Microsoft ClickOnce deployment technology, the optional Bar|Scan Smart Client can be installed throughout your environment for quick access to your Bar|Scan assets from any PC.
- Bar|Scan is an easy to implement, affordable solution which includes personalized training (travel costs are extra). Bar|Scan is comparable to many vendor's solution at a fraction of the cost. It can be installed and ready to use in minutes. Bar|Scan has a solid track record and been in continuous use since 1989.



Bar|Scan® Modules



Optional Upgrades/Modules

Network Upgrade

In addition to the Single User version of the system, Bar|Scan can also operate on a Local Area Network allowing an unlimited number of multiple users to concurrently access and edit all data. Can also operate on a Wide Area Network with sufficient bandwidth. Unlike other systems, we do not license Bar|Scan by the seat.

Multiple Database Upgrade

The Multiple Database Module allows you to create an unlimited number of separate company databases. Each company database can also share tables, such as locations, with another company database as well as import and export items such as reports and catalogs from other company databases. Useful for those who wish to create separate company databases for various customers, such as a storage business, or separate company databases for different locations, such as firm with nationwide offices. Individual company databases can be synchronized by Bar|Scan using ODBC connectivity to maintain an accurate roll-up master company database from multiple locations.

Work Order Module

The Work Order Module allows you to place delivery orders for various assets either specifically, by asset number, or generally, by catalog description. You can also create scheduled Work Orders for maintenance or repair of your assets. The work process flow can be tailored to the type of asset being serviced. Each Work Order has a unique number, the name and department of the person placing the order, the name of the crew assigned the task, and comments regarding the order. As the work order is filled, each asset is scanned with its related Work Order Number using the Pocket PC based bar code reader. When this information is uploaded to Bar|Scan and moved to the asset file, it updates the Work Order status identifying what portion, if any, is still incomplete.

Accounting Module

With this option, purchase, lease, depreciation, and salvage information can be captured for each asset. Bar|Scan can optionally begin depreciation with initial values imported from your old system. Bar|Scan maintains a complete depreciation history for each asset and each depreciation period. Create your own depreciation schedules, adjustments, and more.

The screenshot displays the 'Assets-C:\BARSCAN\NEW DEMOCO\DEMOCO.DBC' window. The 'Browse' tab is active, showing details for Asset # FA0000463800, Catalog # EP, and Price \$500. The 'Depreciation' tab is selected, showing a depreciation method of SL, a life of 60 periods, and a start date of 5/1/2004. The 'Asset Location History' table is visible at the bottom, showing two entries for asset MP.

Region	Bldg	Floor	Room	Vault	Row	Bay	Slot	Level	Room	Moved By	Move Date	Move Time	Work Order	Comments
MP	500	08	0903							BSI	10/18/2006	16:50:00		
MP	500	14	1400B							BSI	8/15/2005	16:50:00		



Bar|Scan® Modules

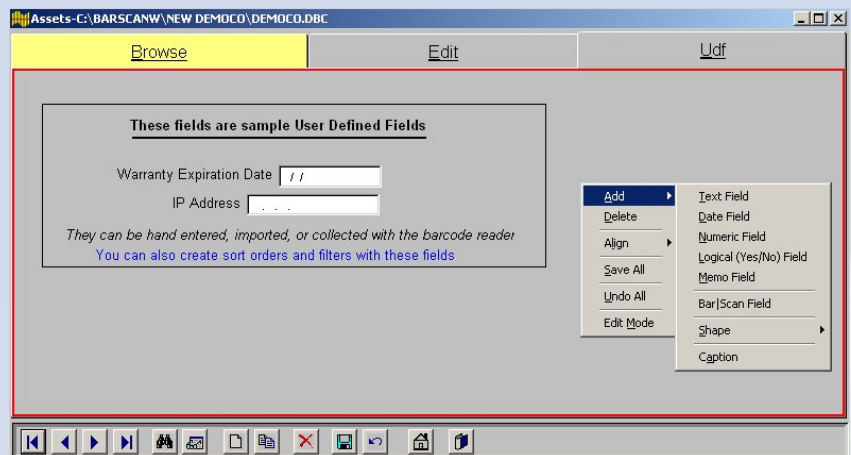
More Optional Modules

Import/Export Module

Bar|Scan is designed to easily share information with other systems without custom programming or a complex setup. The Menu driven Import/Export Module can provide you with three important features. The Export feature allows you to export any combination of fields to other systems such as your enterprise IT management or accounting system. The Import feature allows you to import information into Bar|Scan from another system either as a method to initially populate the assets, or as an ongoing process of obtaining new information. With the Activity Log feature, you can set up and use an Activity Log File which records events as they occur. These events then can serve as an audit trail, or, if desired can also be exported. The Import/Export Module supports many formats including ODBC, Excel, CSV, XML, and ASCII.

User Definable Fields Module

In order to meet your unique requirements, this module allows you to create additional UDFs for each table in your database, without programming or customization! You can create dozens of new fields for your assets, catalogs, locations, etc. You can choose from a selection of field types and sizes, specifying the name of the field on the screen and in reports. The Module can also be used to modify existing Bar|Scan fields. This module is required to add User Defined Fields to the Pocket PC based bar code reader.



Imaging Module

Images from digital cameras and other sources can be linked to the Bar|Scan Catalog as well as individual assets to allow multiple users on your network access to make visual identification by simply clicking the mouse on a view button or asset query screen. Images can also be printed on Bar |Scan reports. Bar|Scan can read many different popular graphic formats.

Bar|Scan[®] Features



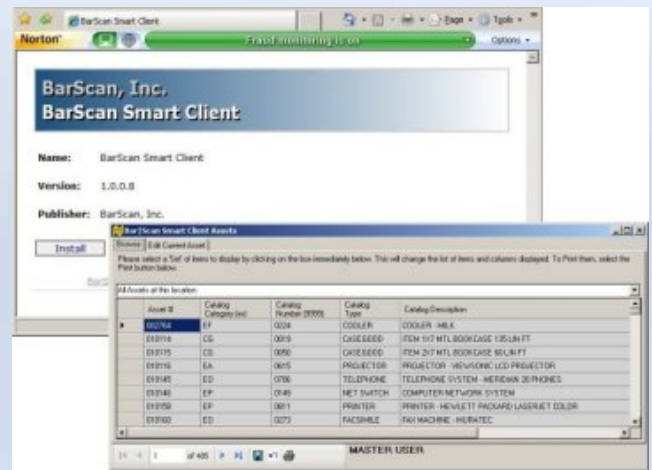
More Bar|Scan Features

Most companies are using the Internet and Networks to share information on a national and global basis. Bar|Scan also uses these technologies. Bar|Scan can also perform advanced tasks normally associated only with enterprise operations.

Bar|Scan Smart Client Software

Using Microsoft ClickOnce deployment technology, the Bar|Scan Smart Client can be installed throughout your environment for quick access to your Bar|Scan Assets. View, print, filter or edit select Bar|Scan asset information sorted by any field in the view. Useful for access of information from remote locations or for a larger audience without using Bar|Scan. Filters can be assigned by user passwords so that only assets in their area of responsibility are accessible.

Since the application is delivered and maintained through your intranet, deployment can easily be scaled. Requires Microsoft IIS, .NET 3.0, and the Bar|Scan Network



Company Synchronization

For Wide Area Networks, Bar|Scan's ODBC synchronization feature allows you to consolidate your databases while still maintaining the speed associated with having your asset database on your local server. Bar|Scan can synchronize two or more local databases which can reside on separate servers. Changes made to one database can be sent to other databases on a regular timed interval determined by you. You can also control the direction of flow and select only the specific Tables that you wish to synchronize. And, it is all menu driven.

XML Instruction Scripts

You can use XML scripts to have Bar|Scan execute a variety of functions. For example, these functions can help the Bar|Scan administrator send email messages to other Bar|Scan users and facilitate logouts. Or they can be used to do an import on a regularly timed basis without user interaction.

Bar|Scan regularly checks for instruction files. Instruction files are just XML formatted text files with both data and instructions contained within them. When Bar|Scan executes an instruction file, it performs the task using the embedded instructions and data to get the job done. These instruction files have their queue for all of the operations related to them. They can be automatically requeue for tasks that need to be performed on a regular basis.



Bar|Scan[®] Services

Inventory Services are Available

Bar|Scan, Inc. has a unique technical approach to your inventory. Each project is scaled to match your requirements. We provide the highest quality inventory services which include bar code asset inventories, reconciliation consulting services and procedural documentation. We also provide internal inventories of personal computer equipment using a variety of diagnostic products.

We can provide implementation and inventory services on a national basis. Bar|Scan, Inc. is headquartered in Westlake Village, California with service representatives in New York, NY, and Washington, D.C.

Optional Services

- Provide reports that reflect all reconciliations including additions, transfers, and retirements to support customer's Financial Statements and work with customer staff throughout the project to ensure that the valuation and inventory work is in compliance with accounting standards
- Import your existing computer asset database of configurations and software licenses
- Develop and draft property manual to incorporate customer's processes and procedures regarding fixed assets
- Regular updates of your completed asset inventory
- Project consultation, custom computer programming and implementation is also available

Personal Computer Hardware Requirements

Any Microsoft Windows based PC with Windows 2000 or newer and a serial or USB port can run Bar|Scan.

Bar|Scan will work on any Windows compatible graphic page printer such as the Hewlett-Packard LaserJet series. Pocket PC communications requires TCP/IP.

Technical Support

There is no charge for any support or upgrades for one year from date of installation. We provide email, telephone and host/remote support for Bar|Scan to answer questions and assist in operations of all of our systems, Monday through Friday, 9:00 A.M. to 5:00 P.M. Pacific Standard Time, excluding holidays. After hours support is available. Support and downloads are also offered at our web site www.barscan.com



Bar|Scan, Inc. is a certified small business. We are located on multiple schedules including CMAS and GSA. We accept Major Credit Cards and GSA SmartPay.